

Higher Current, High Voltage NPN Transistors



SOT-228
Dual



SOT-223
Single



SOT-89
Single



SOT-23
Single



SOT-563
Single

features

- Higher current than standard 5551 (1.0 Amp vs. standard current 600mA)
- Single and Dual configurations
- Variety of surface mount package options

description

The Central Semiconductor 5551HC series are high current, high voltage small signal NPN transistors manufactured by the epitaxial planar process and epoxy molded into various surface mount packages. These high current 1 Amp devices provide a 67% improvement in I_C as compared with a standard 600mA 5551 version. The 5551HC family is ideal for high voltage and high current amplifier applications.

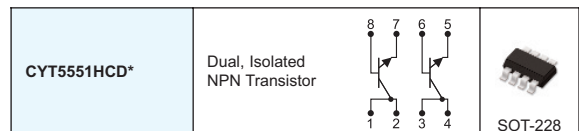
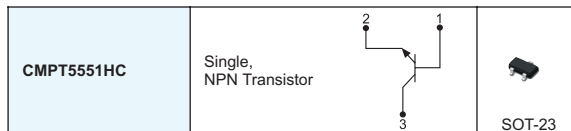
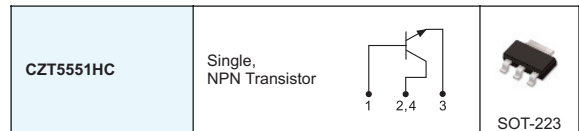
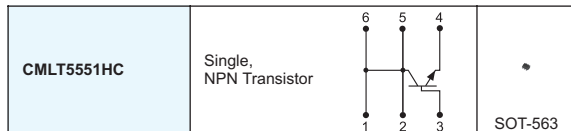
Sample Devices
available
upon request.

selection guide

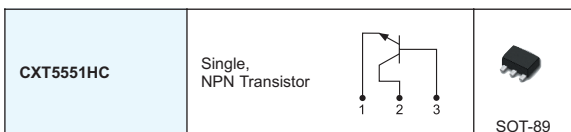


High Current, High Voltage Silicon NPN Transistors

I_C (A) MAX	V_{CBO} (V) MAX	V_{CEO} (V) MAX	V_{EBO} (V) MAX	I_{CBO} (nA) MAX	@ V_{CB} (V)	h_{FE}		@ V_{CE} (V)	@ I_C (mA)	$V_{CE(SAT)}$ (V) MAX	@ I_C (mA)	C_{ob} (pF) MAX	f_T (MHz) MIN
						MIN	MAX						
1.0	180	160	6.0	50	120	80	250	5.0	10	0.20	50	15	100



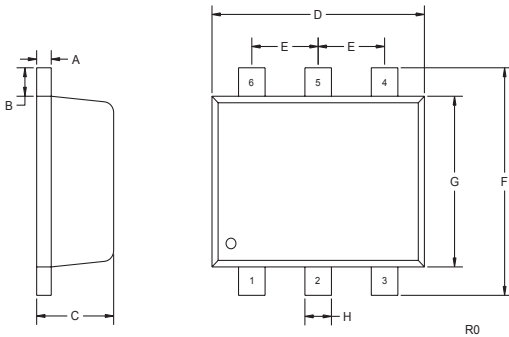
*Expected release date 11/25/05



Higher Current, High Voltage NPN Transistors

Mechanical Specifications

SOT-563



LEAD CODE:

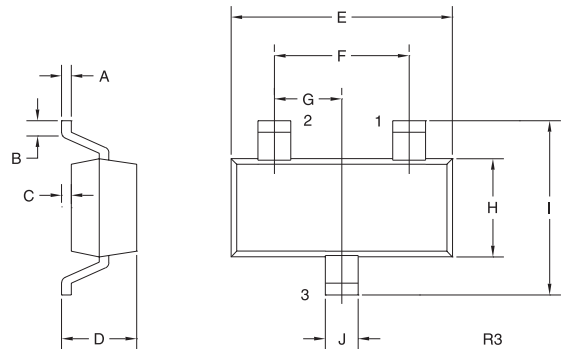
- 1) COLLECTOR
- 2) COLLECTOR
- 3) BASE
- 4) EMITTER
- 5) COLLECTOR
- 6) COLLECTOR

MARKING CODE: C51

SYMBOL	INCHES		MILLIMETERS	
	MIN	MAX	MIN	MAX
A	0.004	0.007	0.10	0.18
B	0.008		0.20	
C	0.022	0.024	0.56	0.60
D	0.059	0.067	1.50	1.70
E	0.020		0.50	
F	0.061	0.067	1.55	1.70
G	0.047		1.20	
H	0.006	0.012	0.15	0.30

SOT-563 (REV: R0)

SOT-23



SYMBOL	INCHES		MILLIMETERS	
	MIN	MAX	MIN	MAX
A	0.003	0.007	0.08	0.18
B	0.006	-	0.15	-
C	-	0.005	-	0.13
D	0.035	0.043	0.89	1.09
E	0.110	0.120	2.80	3.05
F	0.075		1.90	
G	0.037		0.95	
H	0.047	0.055	1.19	1.40
I	0.083	0.098	2.10	2.49
J	0.014	0.020	0.35	0.50

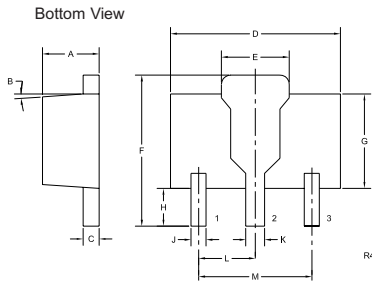
SOT-23 (REV: R3)

LEAD CODE:

- 1) BASE
- 2) EMITTER
- 3) COLLECTOR

MARKING CODE: 1FH3

SOT-89



SYMBOL	INCHES		MILLIMETERS	
	MIN	MAX	MIN	MAX
A	0.055	0.067	1.40	1.70
B	4°		4°	
C	0.014	0.018	0.35	0.46
D	0.173	0.185	4.40	4.70
E	0.064	0.074	1.62	1.87
F	0.146	0.177	3.70	4.50
G	0.090	0.106	2.29	2.70
H	0.028	0.051	0.70	1.30
J	0.014	0.019	0.36	0.48
K	0.017	0.023	0.44	0.58
L	0.059		1.50	
M	0.118		3.00	

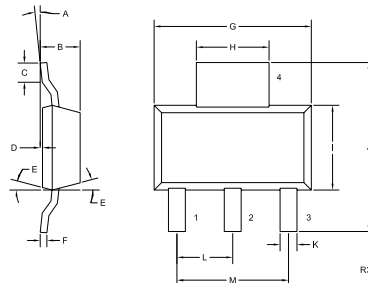
SOT-89 (REV: R4)

LEAD CODE:

- 1) EMITTER
- 2) COLLECTOR
- 3) BASE

MARKING CODE: CXT5551HC

SOT-223



SYMBOL	INCHES		MILLIMETERS	
	MIN	MAX	MIN	MAX
A	0°	10°	0°	10°
B	0.059	0.071	1.50	1.80
C	0.018	-	0.45	-
D	0.000	0.004	0.00	0.10
E	15°		15°	
F	0.009	0.014	0.23	0.35
G	0.248	0.264	6.30	6.70
H	0.114	0.122	2.90	3.10
I	0.130	0.146	3.30	3.70
J	0.264	0.287	6.70	7.30
K	0.024	0.033	0.60	0.85
L	0.091		2.30	
M	0.181		4.60	

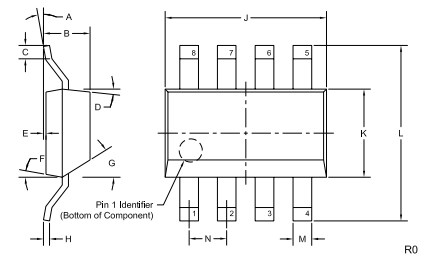
SOT-223 (REV: R3)

LEAD CODE:

- 1) BASE
- 2) COLLECTOR
- 3) EMITTER
- 4) COLLECTOR

MARKING CODE: CZT5551HC

SOT-228



SYMBOL	INCHES		MILLIMETERS	
	MIN	MAX	MIN	MAX
A	0°	10°	0°	10°
B	-	0.075	-	1.90
C	0.018	-	0.45	-
D	4°	10°	4°	10°
E	0.000	0.004	0.00	0.10
F	4°	10°	4°	10°
G	36°	45°	36°	45°
H	0.010		0.25	
J	0.248	0.264	6.30	6.70
K	0.130	0.146	3.30	3.70
L	0.264	0.287	6.70	7.30
M	0.027	0.030	0.68	0.76
N	0.050		1.53	

SOT-228 (REV: R0)

LEAD CODE:

- 1) COLLECTOR Q1
- 2) COLLECTOR Q1
- 3) COLLECTOR Q2
- 4) COLLECTOR Q2
- 5) EMITTER Q2
- 6) BASE Q2
- 7) EMITTER Q1
- 8) BASE Q1

MARKING CODE: CYT5551HCD

CentralTM
Semiconductor Corp.

Innovations in Discrete
Semiconductors

For further information contact:
Sales at Central Semiconductor Corp.
(631) 435-1110 or visit our website at:
www.centalsemi.com

145 Adams Avenue • Hauppauge • New York • 11788 • USA • Tel:(631) 435-1110 • Fax:(631) 435-1824